

# VALVOLE A COMANDO PNEUMATICO

PRESSIONE MINIMA DI ALIMENTAZIONE ATTUATORE 5,5 BAR

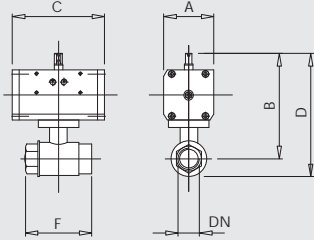
## VALVOLA A SFERA 2 VIE, MICROFUSA SABBBIATA, FILETTATA F/F IN ACCIAIO INOX AISI 316

### DOPPIO EFFETTO

Cod. DE	DN	Ø	A	B	C	D	E	F
Z00W0900300001	1/4"	8	APØ32	48	92	117	112	55
Z00W0900300002	3/8"	10	APØ32	48	93	117	113	56
Z00W0900300003	1/2"	15	APØ32	48	95	117	115	64
Z00W0900300004	3/4"	20	APØ32	48	98	117	121	77
Z00W0900300005	1"	25	APØ50	75	131	138	161	92
Z00W0900300006	1"1/4	32	APØ50	75	136	138	167	103
Z00W0900300007	1"1/2	40	APØ63	86	162	156	203	117
Z00W0900300008	2"	50	APØ63	86	173	156	221	136

### SEMPLICE EFFETTO

Cod. SE	DN	Ø	A	B	C	D	E	F
Z00W0900300009	1/4"	8	APØ42	60,5	99	140	124	55
Z00W0900300010	3/8"	10	APØ42	60,5	105	140	125	56
Z00W0900300011	1/2"	15	APØ42	60,5	107	140	127	64
Z00W0900300012	3/4"	20	APØ50	75	130	138	153	77
Z00W0900300013	1"	25	APØ63	86	147	156	177	92
Z00W0900300014	1"1/4	32	APØ63	86	152	156	183	103
Z00W0900300015	1"1/2	40	APØ75	94	179	210	220	117
Z00W0900300016	2"	50	APØ75	94	190	210	238	136



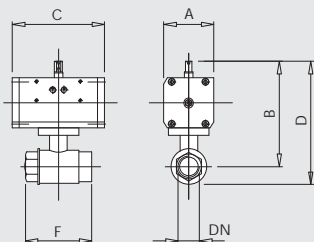
## VALVOLA A SFERA A 2 VIE, MICROFUSA LUCIDA, FILETTATA F/F, IN ACCIAIO INOX AISI 316

### DOPPIO EFFETTO

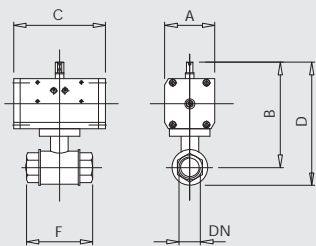
Cod. DE	DN	Ø	A	B	C	D	E	F
Z00W0900300061	1/4"	8	APØ32	48	92	117	112	55
Z00W0900300062	3/8"	10	APØ32	48	93	117	113	56
Z00W0900300063	1/2"	15	APØ32	48	95	117	115	64
Z00W0900300064	3/4"	20	APØ32	48	98	117	121	77
Z00W0900300065	1"	25	APØ50	75	131	138	161	92
Z00W0900300066	1"1/4	32	APØ50	75	136	138	167	103
Z00W0900300067	1"1/2	40	APØ63	86	162	156	203	117
Z00W0900300068	2"	50	APØ63	86	173	156	221	136

### SEMPLICE EFFETTO

Cod. SE	DN	Ø	A	B	C	D	E	F
Z00W0900300069	1/4"	8	APØ42	60,5	99	140	124	55
Z00W0900300070	3/8"	10	APØ42	60,5	105	140	125	56
Z00W0900300071	1/2"	15	APØ42	60,5	107	140	127	64
Z00W0900300072	3/4"	20	APØ50	75	130	138	153	77
Z00W0900300073	1"	25	APØ63	86	147	156	177	92
Z00W0900300074	1"1/4	32	APØ63	86	152	156	183	103
Z00W0900300075	1"1/2	40	APØ75	94	179	210	220	117
Z00W0900300076	2"	50	APØ75	94	190	210	238	136



**VALVOLA A SFERA A 2 VIE, FILETTATA F/F,  
IN OTTONE**



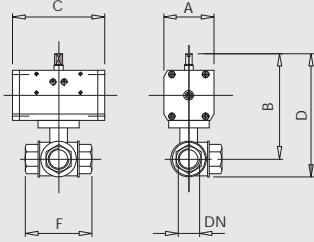
**DOPPIO EFFETTO**

Cod. DE	DN	Ø	A	B	C	D	E	F
Z00W0900300101	1/4"	8	APØ32	48	98	117	111	50
Z00W0900300102	3/8"	10	APØ32	48	99	117	111	60
Z00W0900300103	1/2"	15	APØ32	48	101	117	118	75
Z00W0900300104	3/4"	20	APØ32	48	102	117	122	69
Z00W0900300105	1"	25	APØ32	48	106	117	130	83
Z00W0900300106	1"1/4	32	APØ50	75	144	138	173	94
Z00W0900300107	1"1/2	40	APØ63	86	172	156	212	120
Z00W0900300108	2"	50	APØ63	86	188	156	236	140
Z00W0900300109	2"1/2	65	APØ63	86	188	156	236	165
Z00W0900300110	3"	80	APØ75	94	225	210	290	170
Z00W0900300111	4"	100	APØ75	94	240	210	330	200

**SEMPLICE EFFETTO**

Cod. SE	DN	Ø	A	B	C	D	E	F
Z00W0900300090	1/4"	8	APØ42	60,5	110	140	123	50
Z00W0900300091	3/8"	10	APØ42	60,5	111	140	123	60
Z00W0900300092	1/2"	15	APØ42	60,5	110	140	123	75
Z00W0900300093	3/4"	20	APØ50	75	124	138	144	69
Z00W0900300094	1"	25	APØ63	86	144	156	168	83
Z00W0900300095	1"1/4	32	APØ63	86	160	156	189	94
Z00W0900300096	1"1/2	40	APØ75	94	189	210	229	120
Z00W0900300097	2"	50	APØ75	94	205	210	253	140
Z00W0900300098	2"1/2	65	APØ85	104	215	228	263	165
Z00W0900300099	3"	80	APØ85	104	252	228	317	170
Z00W0900300100	4"	100	APØ100	120	265	280	355	200

**VALVOLA A SFERA A 3 VIE, FILETTATA F/F/F,  
IN OTTONE**



**DOPPIO EFFETTO/FORATURA SFERA A "L"**

Cod. DE	DN	Ø	A	B	C	D	E	F
Z00W0900300121	1/4"	8	APØ32	48	99	117	119	75
Z00W0900300122	3/8"	10	APØ32	48	99	117	119	75
Z00W0900300123	1/2"	15	APØ32	48	99	117	119	75
Z00W0900300124	3/4"	20	APØ50	75	130	138	154	85
Z00W0900300125	1"	25	APØ50	75	136	138	166	103
Z00W0900300126	1"1/4	32	APØ50	75	144	138	187	117
Z00W0900300127	1"1/2	40	APØ63	86	173	156	213	138
Z00W0900300128	2"	50	APØ63	86	187	156	235	162

**DOPPIO EFFETTO/FORATURA SFERA A "T"**

Cod. DE	DN	Ø	A	B	C	D	E	F
Z00W0900300131	1/4"	8	APØ32	48	99	117	119	75
Z00W0900300132	3/8"	10	APØ32	48	99	117	119	75
Z00W0900300133	1/2"	15	APØ32	48	99	117	119	75
Z00W0900300134	3/4"	20	APØ50	75	130	138	154	85
Z00W0900300135	1"	25	APØ50	75	136	138	166	103
Z00W0900300136	1"1/4	32	APØ50	75	144	138	187	117
Z00W0900300137	1"1/2	40	APØ63	86	173	156	213	138
Z00W0900300138	2"	50	APØ63	86	187	156	235	162

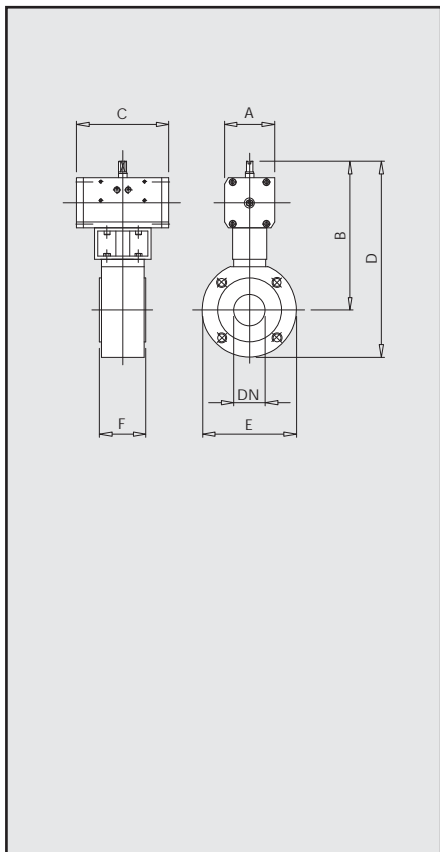
**SEMPLICE EFFETTO/FORATURA SFERA A "L"**

Cod. SE	DN	Ø	A	B	C	D	F	
Z00W0900300141	1/4"	8	APØ42	60,5	111	140	131	75
Z00W0900300142	3/8"	10	APØ42	60,5	111	140	119	75
Z00W0900300143	1/2"	15	APØ50	75	121	138	141	75
Z00W0900300144	3/4"	20	APØ63	86	146	156	170	85
Z00W0900300145	1"	25	APØ63	86	152	156	182	103
Z00W0900300146	1"1/4	32	APØ75	94	177	210	220	117
Z00W0900300147	1"1/2	40	APØ75	94	206	210	246	138
Z00W0900300148	2"	50	APØ85	104	214	228	262	162

**SEMPLICE EFFETTO/FORATURA SFERA A "T"**

Cod. SE	DN	Ø	A	B	C	D	E	F
Z00W0900300151	1/4"	8	APØ42	60,5	111	140	131	75
Z00W0900300152	3/8"	10	APØ42	60,5	111	140	119	75
Z00W0900300153	1/2"	15	APØ50	75	121	138	141	75
Z00W0900300154	3/4"	20	APØ63	86	146	156	170	85
Z00W0900300155	1"	25	APØ63	86	152	156	182	103
Z00W0900300156	1"1/4	32	APØ75	94	177	210	220	117
Z00W0900300157	1"1/2	40	APØ75	94	206	210	246	138
Z00W0900300158	2"	50	APØ85	104	214	228	262	162

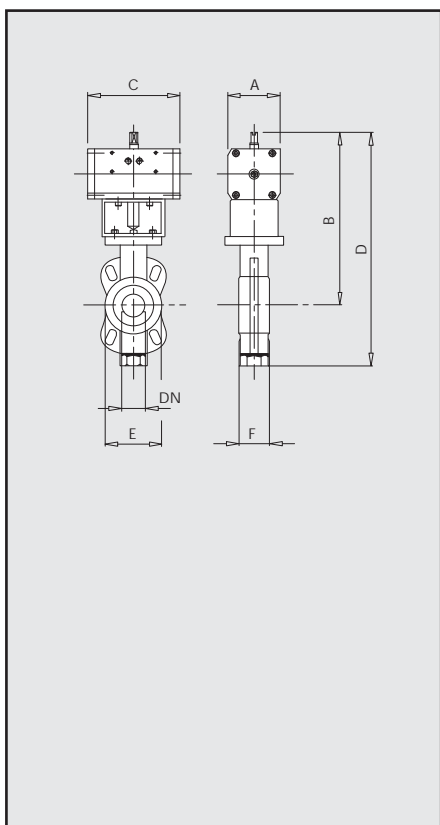
**VALVOLA A SFERA A 2 VIE LUCIDA, FLANGIATA TIPO "WAFER"  
PASSAGGIO TOTALE IN ACCIAIO INOX AISI 304/316**



Cod. DE	DN	Ø	A	B	C	D	E	F	
Z00W0900300021	1/2"	15	APØ32	48	146	117	195	90	35
Z00W0900300022	3/4"	20	APØ50	75	186	138	237	100	38
Z00W0900300023	1"	25	APØ50	75	189	138	242	105	42
Z00W0900300024	1"1/4	32	APØ63	86	223	156	280	130	50
Z00W0900300025	1"1/2	40	APØ63	86	227	156	293	140	60
Z00W0900300026	2"	50	APØ63	86	234	156	303	150	72

Cod. SE	DN	Ø	A	B	C	D	E	F	
Z00W0900300031	1/2"	15	APØ63	86	184	156	233	90	35
Z00W0900300032	3/4"	20	APØ63	86	202	156	253	100	38
Z00W0900300033	1"	25	APØ75	94	222	210	275	105	42
Z00W0900300034	1"1/4	32	APØ75	94	240	210	297	130	50
Z00W0900300035	1"1/2	40	APØ85	104	254	228	320	140	60
Z00W0900300036	2"	50	APØ85	104	261	228	330	150	72

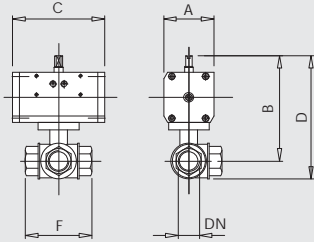
**VALVOLA A FARFALLA "WAFER"  
CORPO IN GHISA DISCO GHISA**



Cod. DE	DN	Ø	A	B	C	D	E	F	
Z00W0900300041	2"	50	APØ63	86	243	155,5	326	102	43
Z00W0900300042	2"1/2	65	APØ63	86	255	155,5	348	122	46
Z00W0900300043	3"	80	APØ75	94	279	210	377	139	46
Z00W0900300044	4"	100	APØ75	94	298	210	413	159	52
Z00W0900300045	5"	125	APØ75	94	311	210	438	189	56
Z00W0900300046	6"	150	APØ85	104	333	228	476	214	56
Z00W0900300047	8"	200	APØ115	134	417	310	589	269	60

Cod. SE	DN	Ø	A	B	C	D	E	F	
Z00W0900300051	2"	50	APØ75	94	260	210	343	102	43
Z00W0900300052	2"1/2	65	APØ75	94	272	210	365	122	46
Z00W0900300053	3"	80	APØ75	94	296	210	394	139	46
Z00W0900300054	4"	100	APØ85	104	308	228	423	159	52
Z00W0900300055	5"	125	APØ100	120	326	280	453	189	56
Z00W0900300056	6"	150	APØ115	134	365	310	508	214	56
Z00W0900300057	8"	200	APØ125	141	430	362	602	269	60

**VALVOLA A SFERA A 3 VIE, FILETTATA MICROFUSA SABBBIATA,  
FILETTATA F/F/F, IN ACCIAIO INOX AISI 316**



**DOPPIO EFFETTO/FORATURA SFERA A "L"**

Cod. DE	DN	Ø	A	B	C	D	E	F
Z00W090030080	1/4"	8	APØ42	60,5	114	160	131	75
Z00W090030081	3/8"	10	APØ42	60,5	114	160	131	75
Z00W090030082	1/2"	15	APØ42	60,5	114	160	131	75
Z00W090030083	3/4"	20	APØ63	86	145	155,5	166	85
Z00W090030084	1"	25	APØ63	86	152	155,5	178	100
Z00W090030085	1"1/4	32	APØ63	86	156	155,5	188	115
Z00W090030086	1"1/2	40	APØ75	94	180	210	220	126
Z00W090030087	2"	50	APØ85	104	202	228	248	147

**DOPPIO EFFETTO/FORATURA SFERA A "T"**

Cod. DE	DN	Ø	A	B	C	D	E	F
Z00W0900300112	1/4"	8	APØ42	60,5	114	160	131	75
Z00W0900300113	3/8"	10	APØ42	60,5	114	160	131	75
Z00W0900300114	1/2"	15	APØ42	60,5	114	160	131	75
Z00W0900300115	3/4"	20	APØ63	86	145	155,5	166	85
Z00W0900300116	1"	25	APØ63	86	152	155,5	178	100
Z00W0900300117	1"1/4	32	APØ63	86	156	155,5	188	115
Z00W0900300118	1"1/2	40	APØ75	94	180	210	220	126
Z00W0900300119	2"	50	APØ85	104	202	228	248	147

**SEMPLICE EFFETTO/FORATURA SFERA A "L"**

Cod. SE	DN	Ø	A	B	C	D	E	F
Z00W0900300161	1/4"	8	APØ63	86	140	155,5	157	75
Z00W0900300162	3/8"	10	APØ63	86	140	155,5	157	75
Z00W0900300163	1/2"	15	APØ63	86	140	155,5	157	75
Z00W0900300164	3/4"	20	APØ75	94	162	210	183	85
Z00W0900300165	1"	25	APØ75	94	168	210	195	100
Z00W0900300166	1"1/4	32	APØ85	104	183	228	215	115
Z00W0900300167	1"1/2	40	APØ115	134	232	310	272	126
Z00W0900300168	2"	50	APØ115	134	244	310	290	147

**SEMPLICE EFFETTO/FORATURA SFERA A "T"**

Cod. SE	DN	Ø	A	B	C	D	E	F
Z00W0900300171	1/4"	8	APØ63	86	140	155,5	157	75
Z00W0900300172	3/8"	10	APØ63	86	140	155,5	157	75
Z00W0900300173	1/2"	15	APØ63	86	140	155,5	157	75
Z00W0900300174	3/4"	20	APØ75	94	162	210	183	85
Z00W0900300175	1"	25	APØ75	94	168	210	195	100
Z00W0900300176	1"1/4	32	APØ85	104	183	228	215	115
Z00W0900300177	1"1/2	40	APØ115	134	232	310	272	126
Z00W0900300178	2"	50	APØ115	134	244	310	290	147

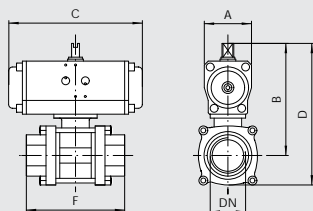
**VALVOLA A SFERA A 2 VIE FILETTATA MICROFUSA SABBIA, FILETTATA F/F, 3 PEZZI IN ACCIAIO INOX AISI 316**

**DOPPIO EFFETTO**

Cod. DE	DN	Ø	A	B	C	D	E	F
Z00W0900300181	1/4"	8	APØ32	48	104	117	123	64
Z00W0900300182	3/8"	10	APØ32	48	104	117	123	64
Z00W0900300183	1/2"	15	APØ32	48	109	117	129	72
Z00W0900300184	3/4"	20	APØ32	48	112	117	138	80
Z00W0900300185	1"	25	APØ42	60,5	132	160	162	86
Z00W0900300186	1"1/4	32	APØ50	75	145	138	183	106
Z00W0900300187	1"1/2	40	APØ63	86	177	155,5	213	114
Z00W0900300188	2"	50	APØ63	86	189	155,5	235	132
Z00W0900300189	2"1/2	65	APØ75	94	230	210	290	170
Z00W0900300190	3"	80	APØ100	120	264	280,5	330	185

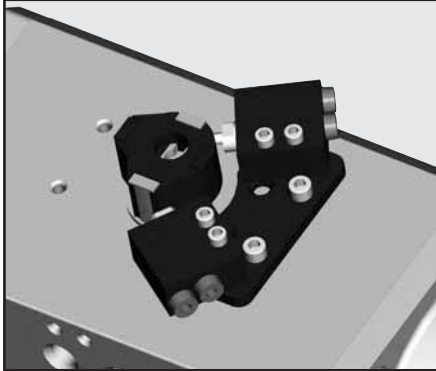
**SEMPLICE EFFETTO**

Cod. SE	DN	Ø	A	B	C	D	E	F
Z00W0900300201	1/4"	8	APØ42	60,5	116	160	135	64
Z00W0900300202	3/8"	10	APØ42	60,5	116	160	135	64
Z00W0900300203	1/2"	15	APØ50	75	131	138	151	72
Z00W0900300204	3/4"	20	APØ63	86	150	155,5	176	80
Z00W0900300205	1"	25	APØ63	86	158	155,5	188	86
Z00W0900300206	1"1/4	32	APØ75	94	178	210	216	106
Z00W0900300207	1"1/2	40	APØ75	94	194	210	230	114
Z00W0900300208	2"	50	APØ75	94	216	210	262	132
Z00W0900300209	2"1/2	65	APØ100	120	255	280,5	315	170
Z00W0900300210	3"	80	APØ145	163	324	390	390	185



# ACCESSORI VALVOLE COMANDO PNEUMATICO

Cod.



- Z00W0900300901 KIT STAFFA FISSAGGIO X VME X ATT. AP032
- Z00W0900300902 KIT STAFFA FISSAGGIO X VME X ATT. AP042/050/063
- Z00W0900300903 KIT STAFFA FISSAGGIO X VME X ATT. AP075/085/100
- Z00W0900300904 KIT STAFFA FISSAGGIO X VME X ATT. AP115/125/145/160

ORDINARE SEPARATAMENTE VALVOLA VME:

- W3501000100 VALVOLA VME 1-01 NC Ø4
- W3501000101 VALVOLA VMS 1-10 NO Ø4

Cod.



- Z00W0900300910 SWITCH BOX CON MICROINTERRUTTORI ELETTROMECCANICI SPDT
- Z00W0900300911 SWITCH BOX CON SENSORI INDUTTIVI P+F NBB2-V3-E2 PNP NO
- Z00W0900300912 SWITCH BOX CON SENSORI INDUTTIVI IMF IS5026 2 FILI PROGRAMMABILI NO/NC
- Z00W0900300913 SWITCH BOX CON SENSORI INDUTTIVI P+F NBB3-V3-Z4 2 FILI AMPLIFICATO NO
- Z00W0900300914 SWITCH BOX CON SENSORI INDUTTIVI P+F NJ2-V3-NAMUR CON CERTIFICAZIONE ATEX

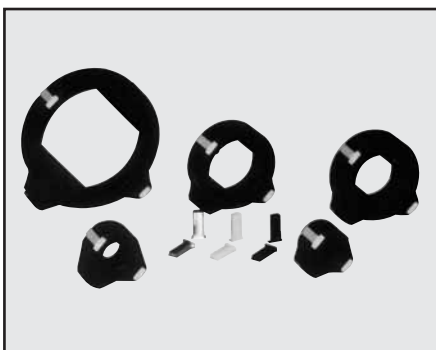
Cod.



ORDINARE SEPARATAMENTE ELETTROVALVOLA NAMUR:

- 7021010100 VALVOLA PNV A4 PNS NC
- 7021010200 VALVOLA PNV A5 PNB OO
- 7021010210 VALVOLA PNV A4 PNB OO
- 7021020100 VALVOLA SOV A5 SOS OO
- 7021020110 VALVOLA SOV A4 SOS NC
- 7021020200 VALVOLA SOV A5 SOB OO
- 7021020210 VALVOLA SOV A4 SOB OO

Cod.



- Z00W0900300930 INDICATORE DI POSIZIONE X ATT. AP032/042/050/063
- Z00W0900300931 INDICATORE DI POSIZIONE X ATT. AP075/080/100
- Z00W0900300932 INDICATORE DI POSIZIONE X ATT. AP115/125/145/160